

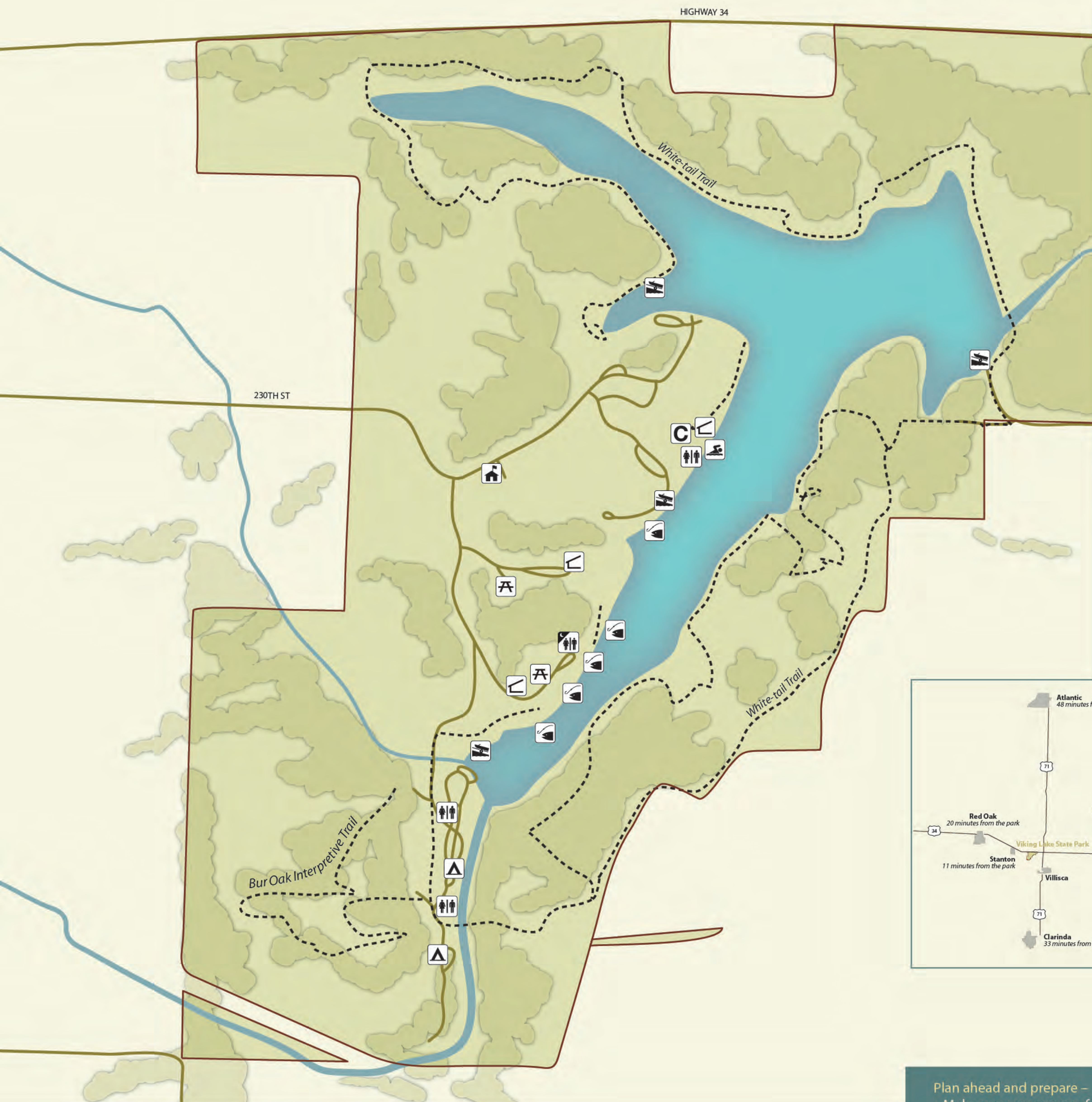


VIKING LAKE STATE PARK

EXPLORE IOWA STATE PARKS!

Founded in 1920, Iowa's state park system boasts 87 state parks for you to explore and enjoy.

Viking Lake State Park opened in 1951. A large portion of the grounds have been left in their natural state, with an abundance of wildflowers and other native plants. Walk the interpretive trail. Look for beavers, turkeys, muskrats, ducks, shorebirds, and white-tailed deer. Boat, fish, swim—enjoy one of the most popular state parks in southwest Iowa!



- Restroom - Modern Seasonal
- Restroom - Nonmodern Year-round
- Park Office
- Shelter
- Campground
- Boat Ramp
- Concession
- Picnic Area
- Beach
- Fishing Pier/ Jetty

TRAIL INFORMATION

| TRAIL NAME | TRAIL ACTIVITY | LENGTH | LEVEL OF DIFFICULTY | ESTIMATED HIKE TIME |
|----------------------|----------------|--------|---------------------|---------------------|
| Bur Oak Interpretive | Hiking | 0.9 mi | Moderate | 25-35 min |
| White-tail | Hiking | 6.3 mi | Moderate | 3-3½ hr |

Walking times are figured at a rate of 2 mph.

- Hiking Trails
- Roads
- Water
- Park Boundary

Plan ahead and prepare –

- Make sure you prepare for the day by bringing plenty of water, sunscreen, bug spray, and comfortable walking/hiking shoes.
- Always make sure someone knows you are out on the trail.

Dispose of waste properly –

- Pack out all trash, leftover food and litter.
- Pick up any litter you find on the trail and make the place better for the next visitor who comes along.

Respect wildlife –

- Observe wildlife from a distance. Do not follow or approach them. Leave all young wildlife as you find them and don't assume they've been abandoned. Many adults hide young to keep them safe while they are out feeding or leading predators away.

This copyrighted information has been reprinted with permission from the Leave No Trace Center for Outdoor Ethics: www.LNT.org

For more information visit:
www.iowadnr.gov/destinations

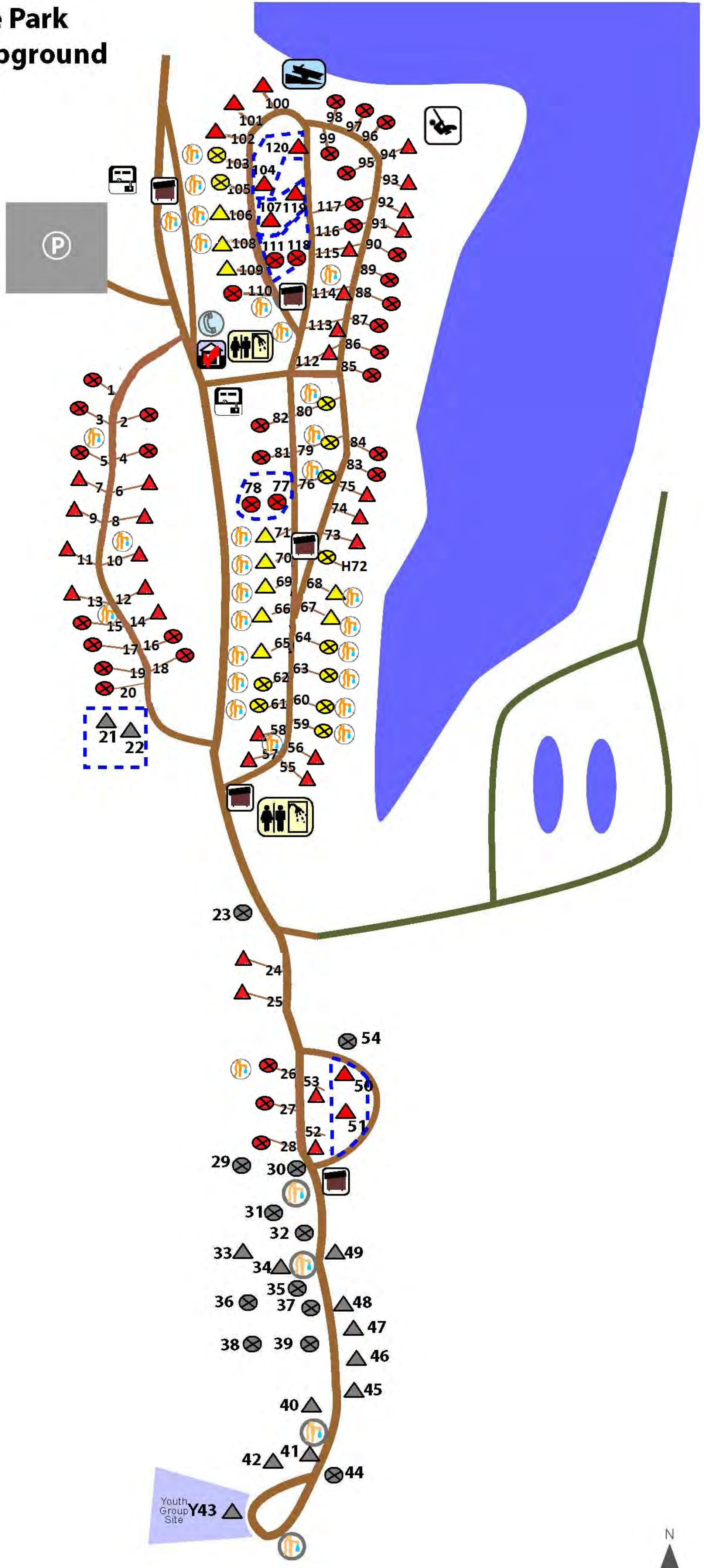


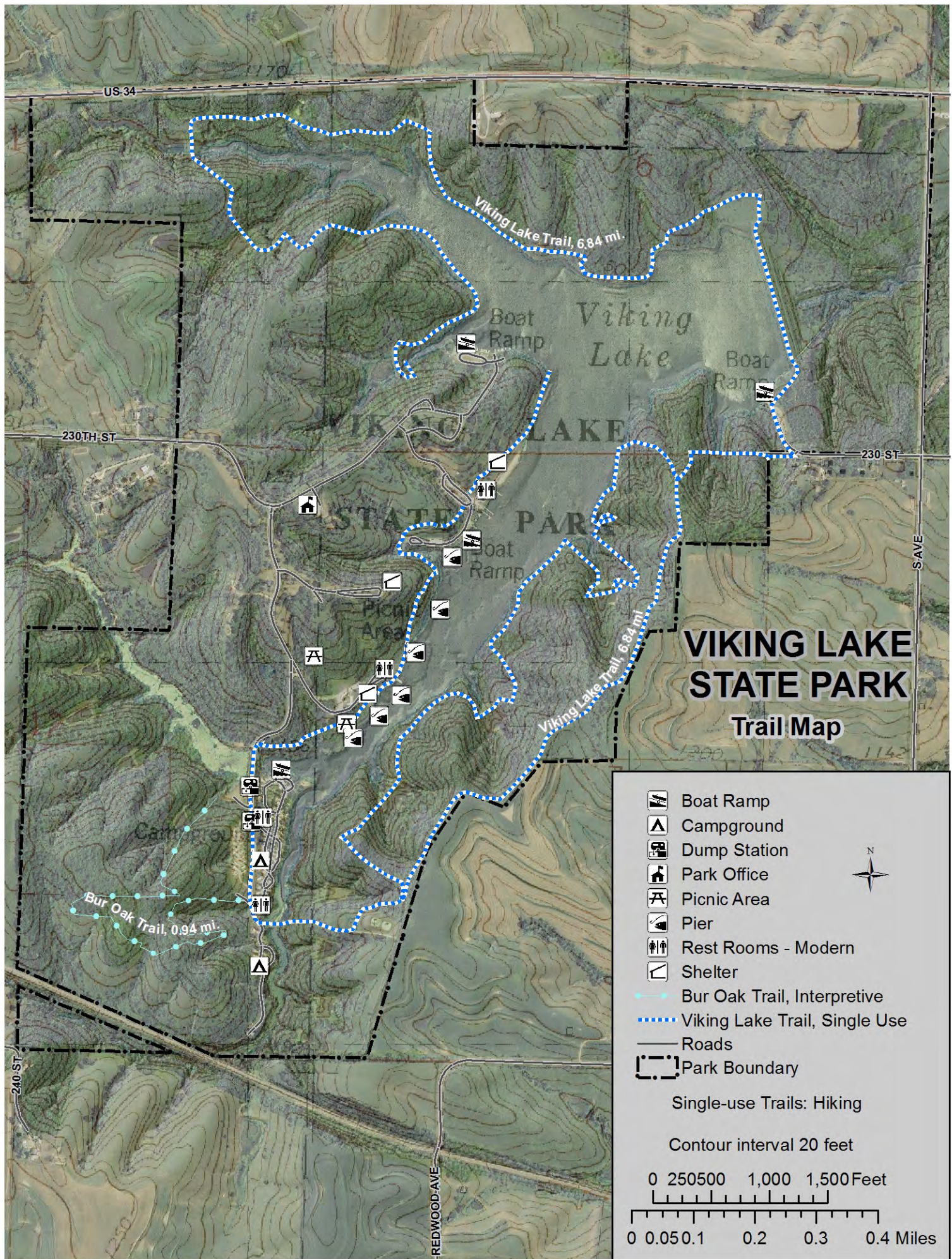
STATE PARKS
IOWA DEPARTMENT
OF NATURAL RESOURCES

Viking Lake State Park

Viking Lake Campground

- △ Reservable
- ▲ 50-amp
- ▲ Full hook-up
- ▲ Non-electric
- ⊗ Non-Reservable
- ⊗ 50-amp
- ⊗ Full hook-up
- ⊗ Non-electric





US-34

230TH ST

230 ST

SAVE

240 ST

REDWOOD AVE

Viking Lake Trail, 6.84 mi.

Viking Lake Trail, 6.84 mi.

Bur Oak Trail, 0.94 mi.

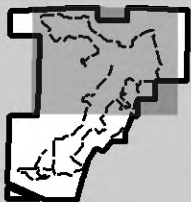
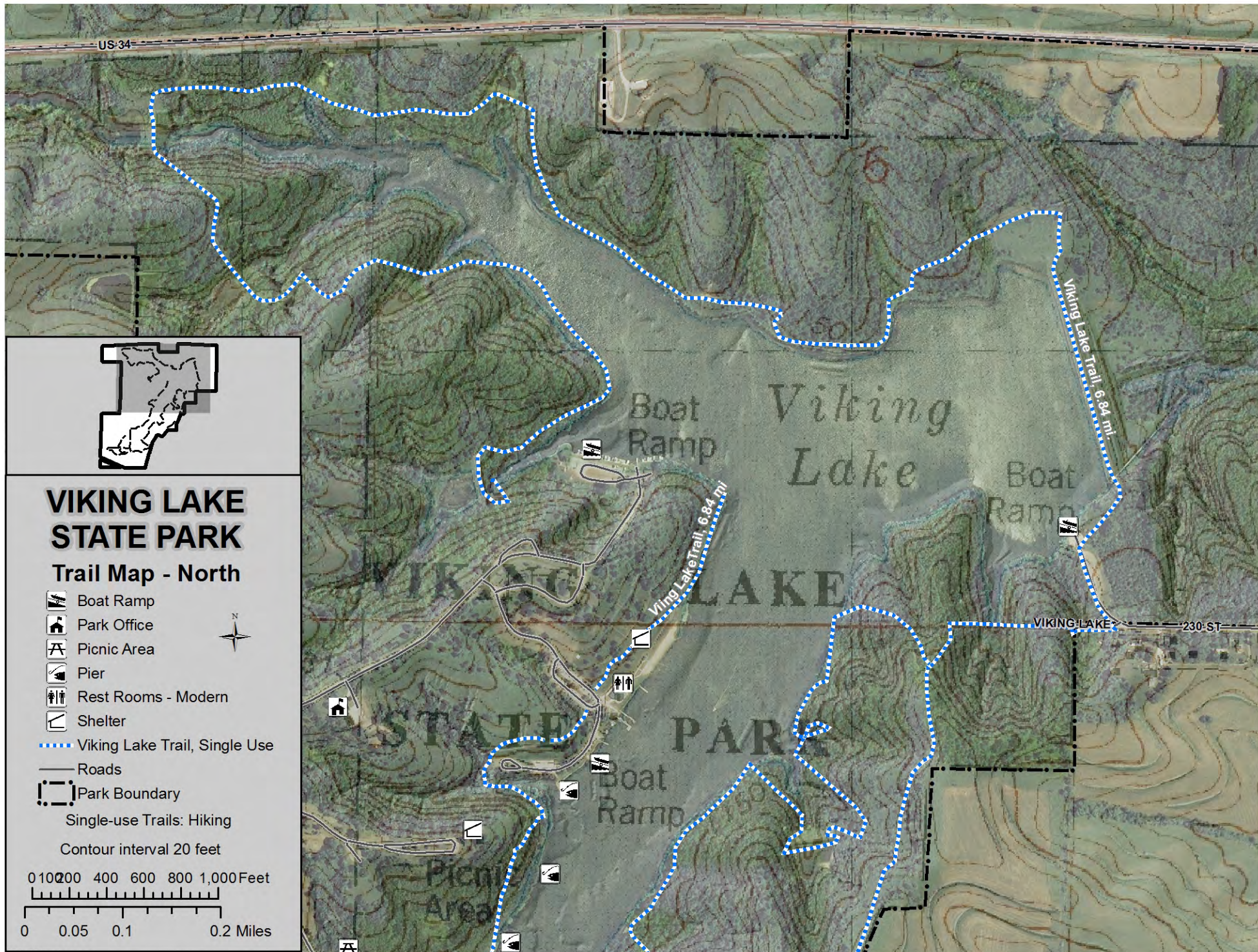
Viking Lake

VIKING LAKE

STATE PARK










VIKING LAKE STATE PARK
Trail Map





VIKING LAKE STATE PARK

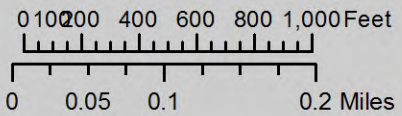
Trail Map - North

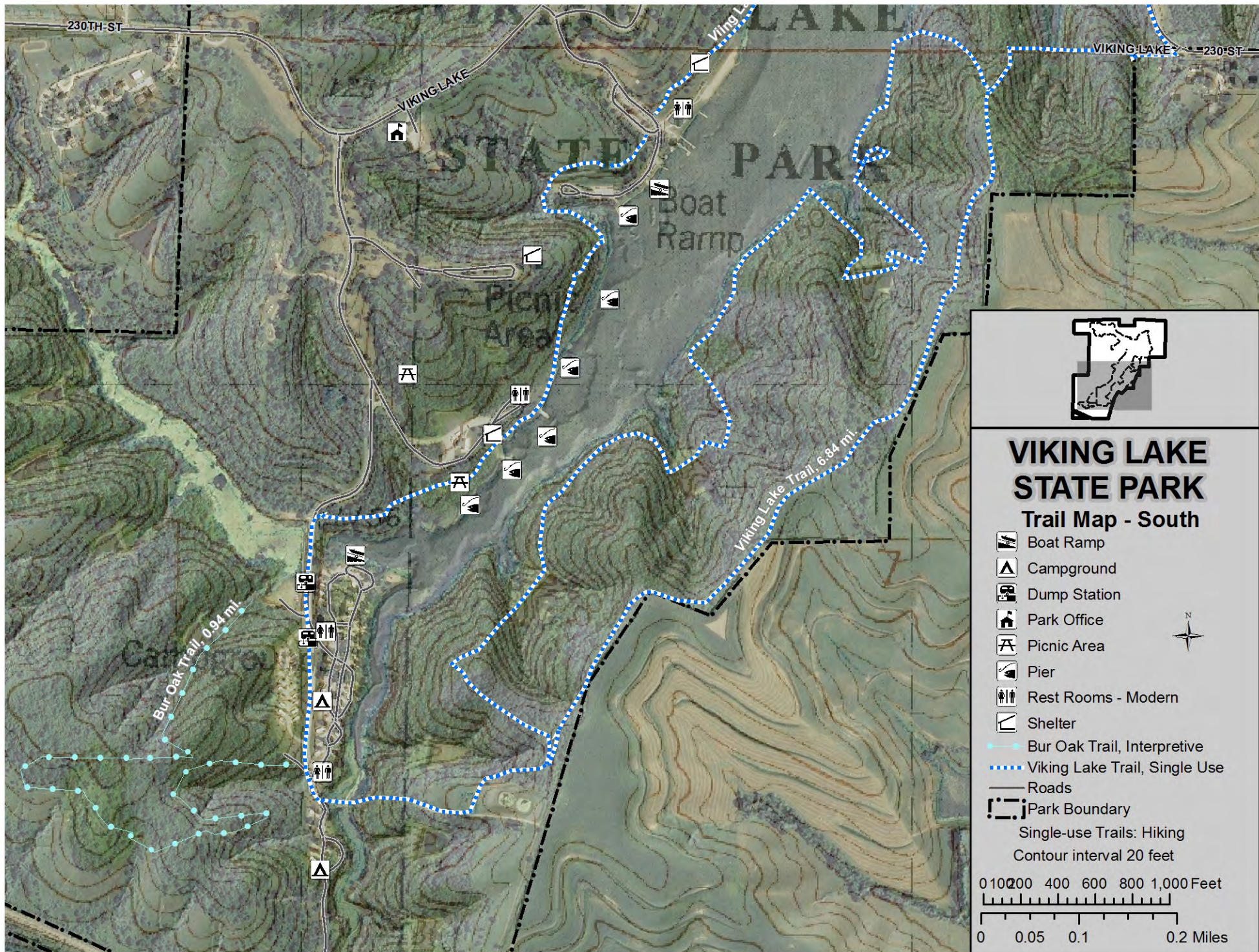
-  Boat Ramp
-  Park Office
-  Picnic Area
-  Pier
-  Rest Rooms - Modern
-  Shelter
-  Viking Lake Trail, Single Use
-  Roads
-  Park Boundary



Single-use Trails: Hiking

Contour interval 20 feet





VIKING LAKE STATE PARK

Trail Map - South

- Boat Ramp
- Campground
- Dump Station
- Park Office
- Picnic Area
- Pier
- Rest Rooms - Modern
- Shelter
- Bur Oak Trail, Interpretive
- Viking Lake Trail, Single Use
- Roads
- Park Boundary



Single-use Trails: Hiking
Contour interval 20 feet

